



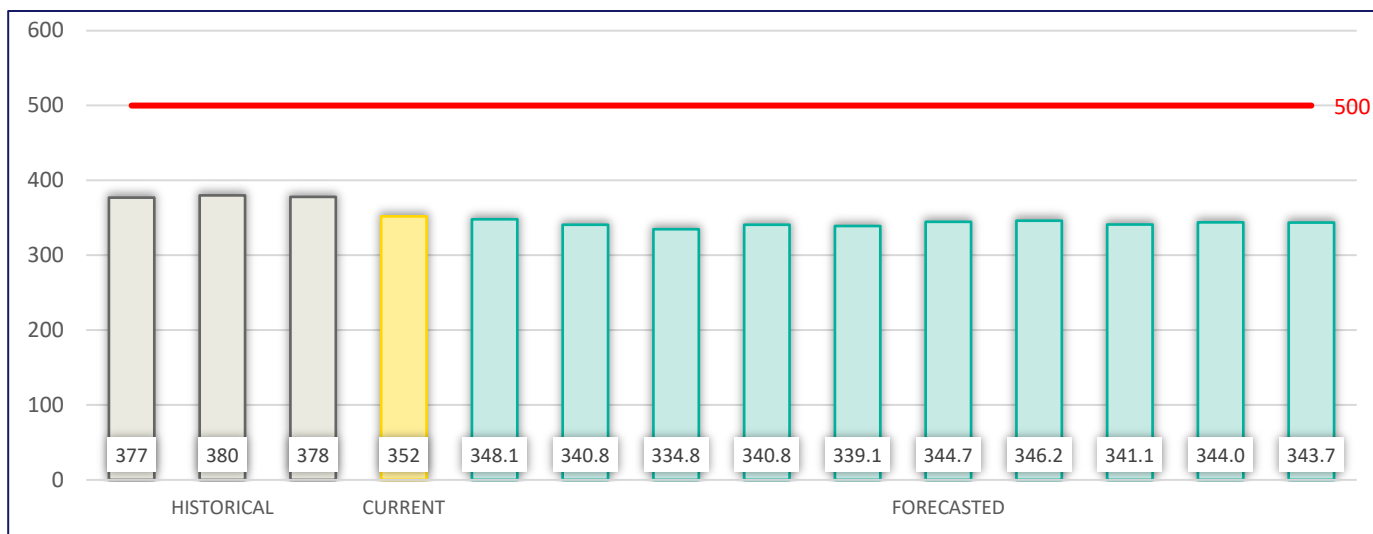
Shaler Area School District

Student Forecast SY 2023-2024

Resident Forecasts by Attendance Area

Burchfield PS														
Grade	Historic Resident Students			Current	Forecasted Resident Students									
	SY 2020	SY 2021	SY 2022	SY 2023	SY 2024	SY 2025	SY 2026	SY 2027	SY 2028	SY 2029	SY 2030	SY 2031	SY 2032	SY 2033
K	92	94	94	88	87.6	82.9	88.4	93.7	85.9	89.3	89.7	88.3	89.1	89.0
1	107	90	94	94	87.1	86.7	82.1	87.6	92.8	85.0	88.4	88.8	87.4	88.2
2	89	105	87	85	89.3	82.8	82.4	78.0	83.2	88.1	80.8	84.0	84.3	83.0
3	89	91	103	85	84.1	88.4	81.9	81.5	77.2	82.3	87.3	80.0	83.2	83.5
K-3	377	380	378	352	348.1	340.8	334.8	340.8	339.1	344.7	346.2	341.1	344.0	343.7
Capacity	Historic Capacity				Forecasted Capacity									
500	75%	76%	76%	70%	70%	68%	67%	68%	68%	69%	69%	68%	69%	69%

Annual Change	2020 to 2021	2021 to 2022	2022 to 2023	2023 to 2024	2024 to 2025	2025 to 2026	2026 to 2027	2027 to 2028	2028 to 2029	2029 to 2030	2030 to 2031	2031 to 2032	2032 to 2033	
		3.0	-2.0	-26.0	-3.9	-7.3	-6.0	6.0	-1.7	5.6	1.5	-5.1	2.9	-0.3
		0.8%	-0.5%	-6.9%	-1.1%	-2.1%	-1.8%	1.8%	-0.5%	1.7%	0.4%	-1.5%	0.9%	-0.1%





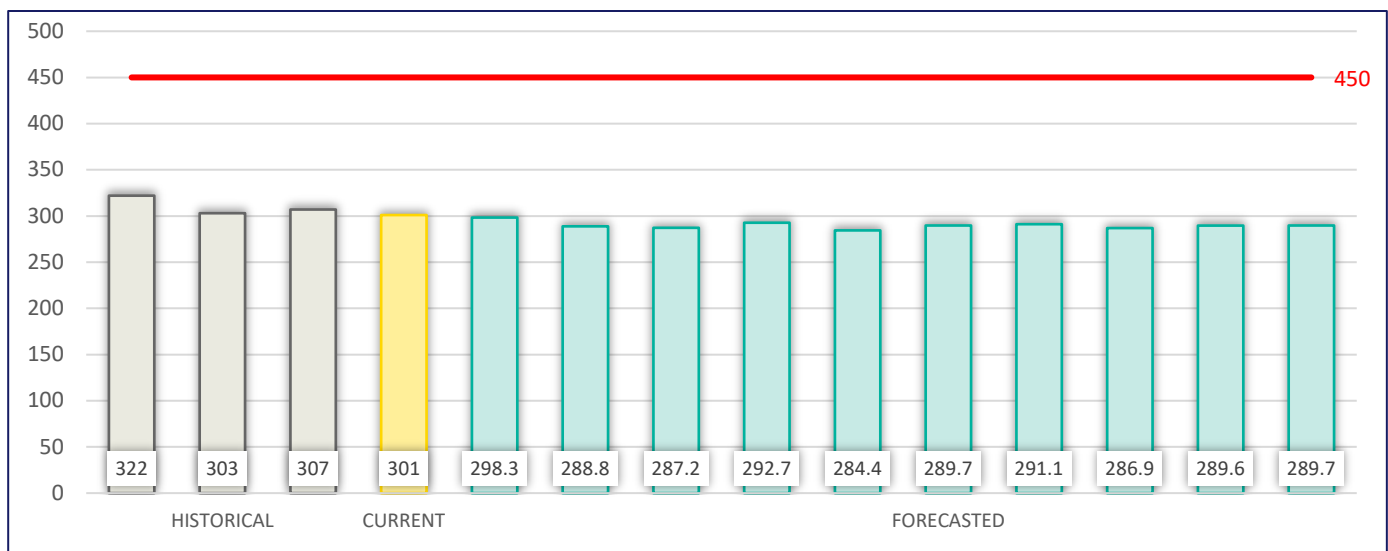
Shaler Area School District

Student Forecast SY 2023-2024

Resident Forecasts by Attendance Area

Marzolf PS														
Grade	Historic Resident Students			Current	Forecasted Resident Students									
	SY 2020	SY 2021	SY 2022	SY 2023	SY 2024	SY 2025	SY 2026	SY 2027	SY 2028	SY 2029	SY 2030	SY 2031	SY 2032	SY 2033
K	72	81	77	75	82.0	70.6	75.4	80.0	73.3	76.3	76.7	75.5	76.3	76.3
1	85	73	77	74	72.0	78.8	67.8	72.5	76.9	70.5	73.4	73.7	72.6	73.3
2	76	77	76	74	71.0	69.1	75.6	65.2	69.6	73.9	67.8	70.5	70.8	69.8
3	89	72	77	78	73.3	70.3	68.4	75.0	64.6	69.0	73.2	67.2	69.9	70.3
K-3	322	303	307	301	298.3	288.8	287.2	292.7	284.4	289.7	291.1	286.9	289.6	289.7
Capacity	Historic Capacity			Current	Forecasted Capacity									
450	72%	67%	68%	67%	66%	64%	64%	65%	63%	64%	65%	64%	64%	64%

Annual Change	2020 to 2021	2021 to 2022	2022 to 2023	2023 to 2024	2024 to 2025	2025 to 2026	2026 to 2027	2027 to 2028	2028 to 2029	2029 to 2030	2030 to 2031	2031 to 2032	2032 to 2033	
		-19.0	4.0	-6.0	-2.7	-9.5	-1.6	5.5	-8.3	5.3	1.4	-4.2	2.7	0.1
		-5.9%	1.3%	-2.0%	-0.9%	-3.2%	-0.6%	1.9%	-2.8%	1.9%	0.5%	-1.4%	0.9%	0.0%





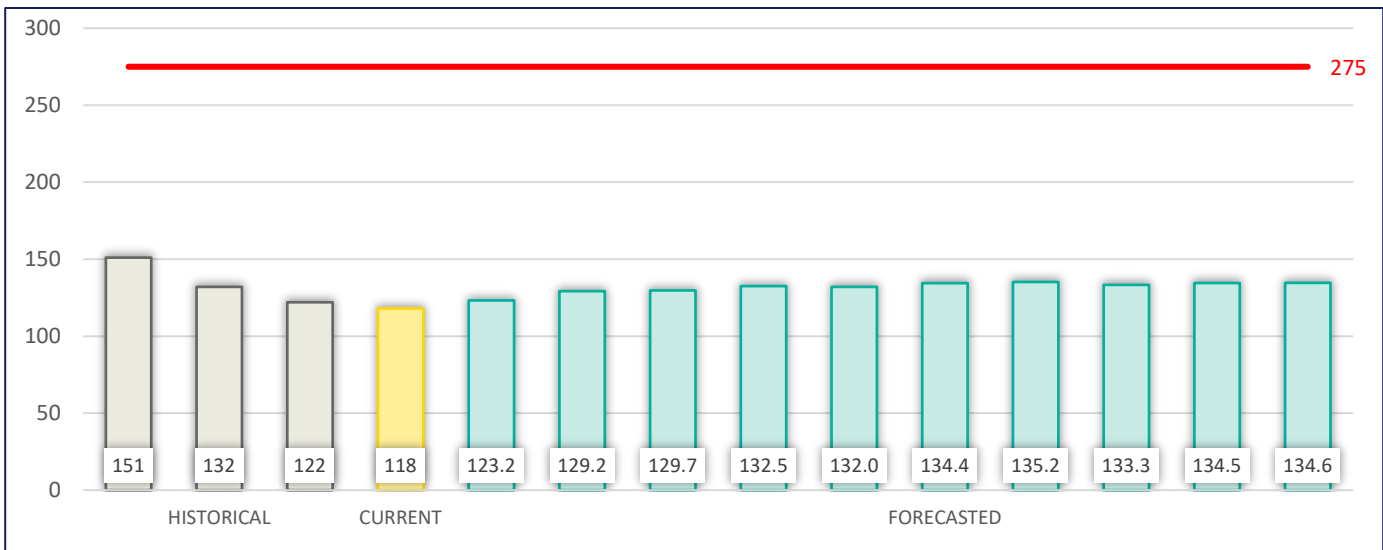
Shaler Area School District

Student Forecast SY 2023-2024

Resident Forecasts by Attendance Area

Reserve PS														
Grade	Historic Resident Students			Current	Forecasted Resident Students									
	SY 2020	SY 2021	SY 2022	SY 2023	SY 2024	SY 2025	SY 2026	SY 2027	SY 2028	SY 2029	SY 2030	SY 2031	SY 2032	SY 2033
K	31	27	32	35	34.8	33.0	35.2	37.4	34.3	35.7	35.9	35.4	35.7	35.7
1	41	29	26	34	34.3	34.1	32.3	34.5	36.7	33.7	35.1	35.2	34.7	35.1
2	36	39	25	23	30.6	30.9	30.7	29.2	31.2	33.1	30.4	31.6	31.8	31.3
3	43	37	39	26	23.5	31.2	31.5	31.4	29.8	31.9	33.8	31.1	32.3	32.5
K-3	151	132	122	118	123.2	129.2	129.7	132.5	132.0	134.4	135.2	133.3	134.5	134.6
Capacity	Historic Capacity				Forecasted Capacity									
275	55%	48%	44%	43%	45%	47%	47%	48%	48%	49%	49%	48%	49%	49%

Annual Change	2020 to 2021	2021 to 2022	2022 to 2023	2023 to 2024	2024 to 2025	2025 to 2026	2026 to 2027	2027 to 2028	2028 to 2029	2029 to 2030	2030 to 2031	2031 to 2032	2032 to 2033	
		-19.0	-10.0	-4.0	5.2	6.0	0.5	2.8	-0.5	2.4	0.8	-1.9	1.2	0.1
		-12.6%	-7.6%	-3.3%	4.4%	4.9%	0.4%	2.2%	-0.4%	1.8%	0.6%	-1.4%	0.9%	0.1%





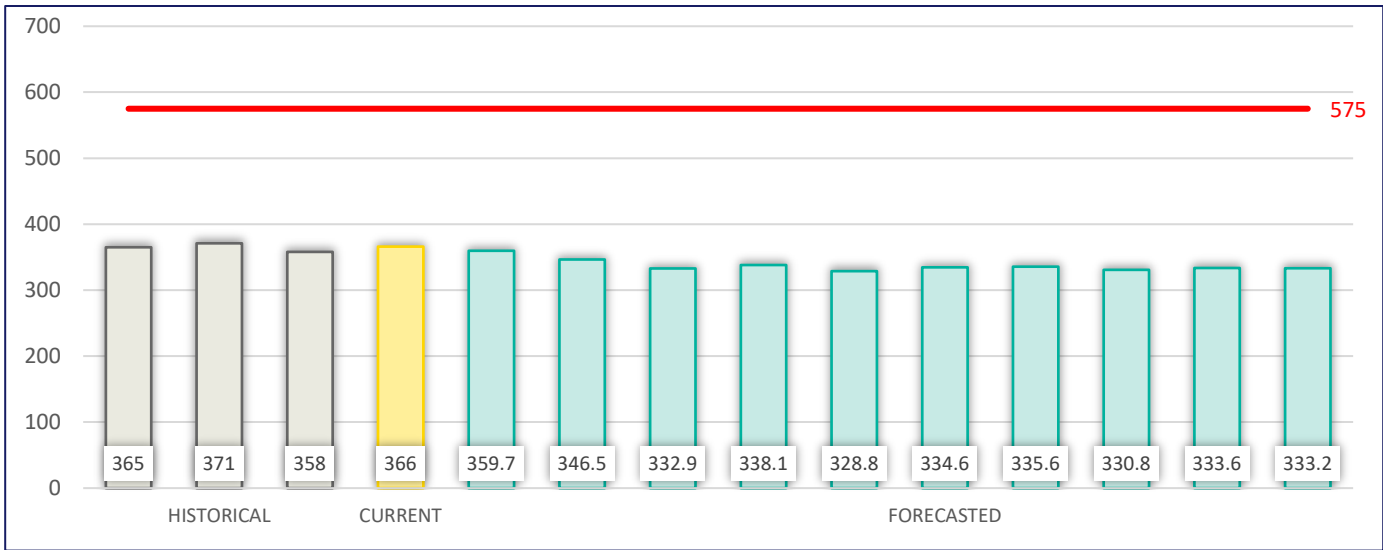
Shaler Area School District

Student Forecast SY 2023-2024

Resident Forecasts by Attendance Area

Scott PS														
Grade	Historic Resident Students			Current	Forecasted Resident Students									
	SY 2020	SY 2021	SY 2022	SY 2023	SY 2024	SY 2025	SY 2026	SY 2027	SY 2028	SY 2029	SY 2030	SY 2031	SY 2032	SY 2033
K	98	102	100	88	96.3	82.9	88.4	93.7	85.9	89.3	89.7	88.3	89.1	89.0
1	80	92	93	98	82.7	90.5	77.9	83.1	88.1	80.7	84.0	84.3	83.0	83.7
2	101	81	93	89	97.0	81.9	89.6	77.1	82.3	87.2	79.9	83.1	83.4	82.1
3	86	96	72	91	83.7	91.2	77.0	84.2	72.5	77.4	82.0	75.1	78.1	78.4
K-3	365	371	358	366	359.7	346.5	332.9	338.1	328.8	334.6	335.6	330.8	333.6	333.2
Capacity	Historic Capacity				Forecasted Capacity									
575	63%	65%	62%	64%	63%	60%	58%	59%	57%	58%	58%	58%	58%	58%

Annual Change	2020 to 2021	2021 to 2022	2022 to 2023	2023 to 2024	2024 to 2025	2025 to 2026	2026 to 2027	2027 to 2028	2028 to 2029	2029 to 2030	2030 to 2031	2031 to 2032	2032 to 2033	
		6.0	-13.0	8.0	-6.3	-13.2	-13.6	5.2	-9.3	5.8	1.0	-4.8	2.8	-0.4
		1.6%	-3.5%	2.2%	-1.7%	-3.7%	-3.9%	1.6%	-2.8%	1.8%	0.3%	-1.4%	0.8%	-0.1%





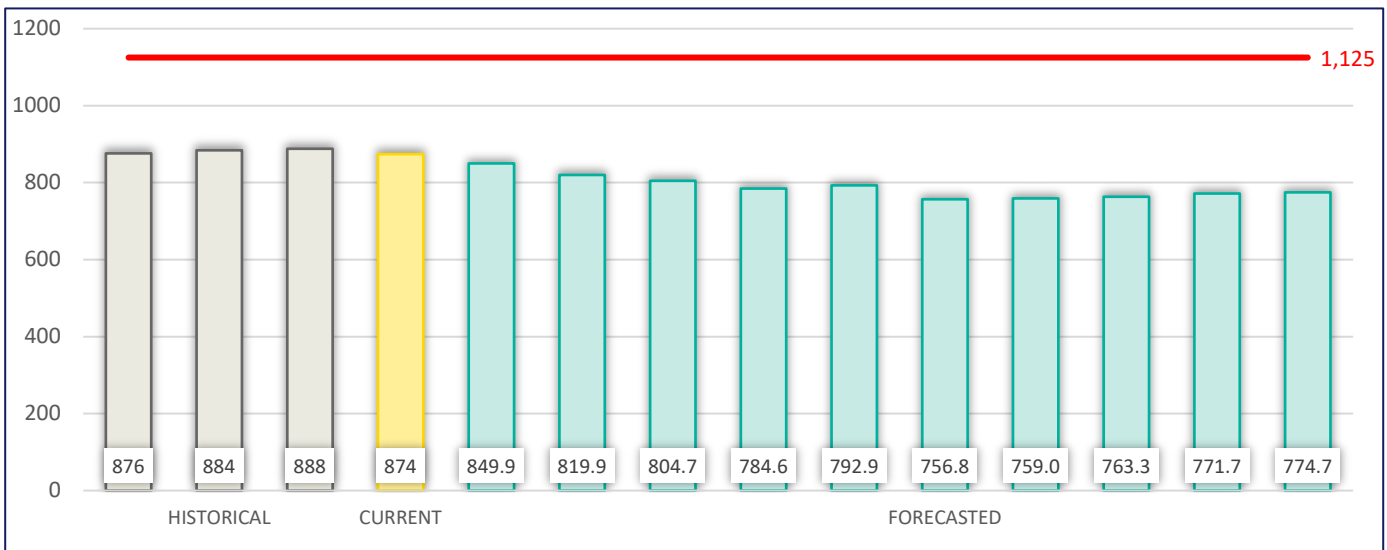
Shaler Area School District

Student Forecast SY 2023-2024

Resident Forecasts by Attendance Area

Shaler ES														
Grade	Historic Resident Students			Current	Forecasted Resident Students									
	SY 2020	SY 2021	SY 2022	SY 2023	SY 2024	SY 2025	SY 2026	SY 2027	SY 2028	SY 2029	SY 2030	SY 2031	SY 2032	SY 2033
K	293	304	303	286	300.7	269.4	287.4	304.8	279.4	290.7	291.9	287.4	290.1	289.9
1	313	284	290	300	276.1	290.1	260.1	277.7	294.4	269.9	280.8	282.0	277.7	280.3
2	302	302	281	271	288.0	264.6	278.3	249.5	266.3	282.3	258.9	269.3	270.4	266.3
3	307	296	291	280	264.5	281.1	258.8	272.1	244.2	260.6	276.3	253.4	263.5	264.7
4	309	303	291	295	278.0	262.5	279.1	257.2	270.5	242.6	259.0	274.5	251.8	261.9
5	279	304	295	286	288.4	271.6	256.3	273.0	251.6	264.6	237.4	253.3	268.6	246.3
6	288	277	302	293	283.5	285.8	269.3	254.4	270.8	249.6	262.6	235.5	251.3	266.5
4-6	876	884	888	874	849.9	819.9	804.7	784.6	792.9	756.8	759.0	763.3	771.7	774.7
Capacity	Historic Capacity				Forecasted Capacity									
1,125	78%	79%	79%	78%	76%	73%	72%	70%	70%	67%	67%	68%	69%	69%

Annual Change	2020 to 2021	2021 to 2022	2022 to 2023	2023 to 2024	2024 to 2025	2025 to 2026	2026 to 2027	2027 to 2028	2028 to 2029	2029 to 2030	2030 to 2031	2031 to 2032	2032 to 2033
	8.0	4.0	-14.0	-24.1	-30.0	-15.2	-20.1	8.3	-36.1	2.2	4.3	8.4	3.0
	0.9%	0.5%	-1.6%	-2.8%	-3.5%	-1.9%	-2.5%	1.1%	-4.6%	0.3%	0.6%	1.1%	0.4%

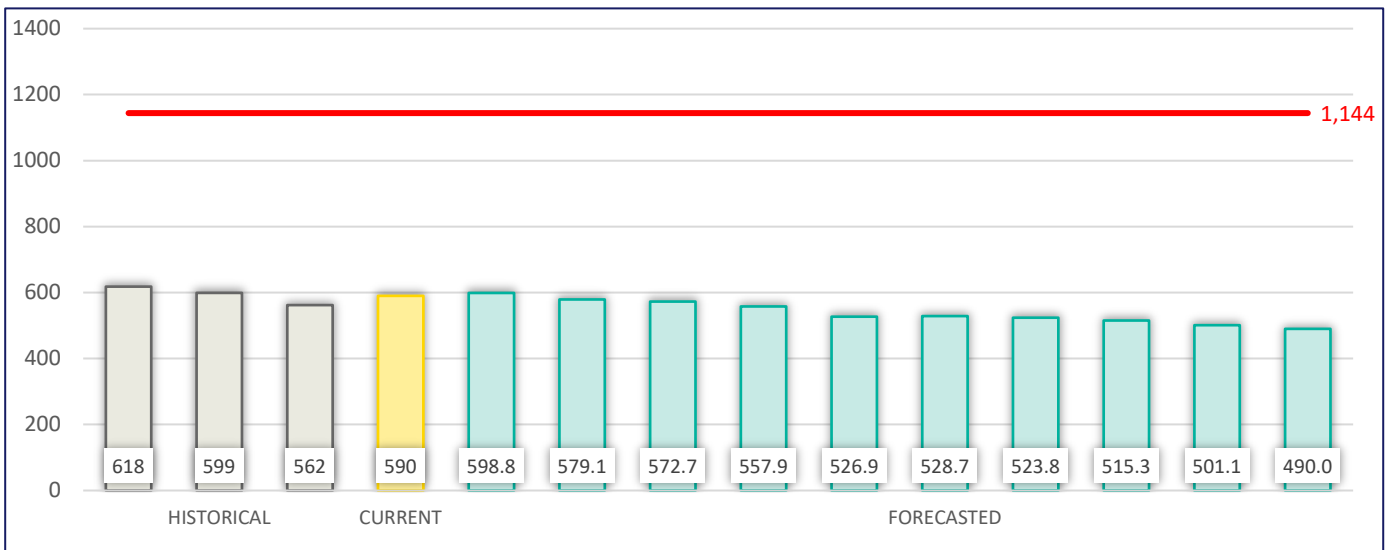




Shaler Area School District Student Forecast SY 2023-2024 Resident Forecasts by Attendance Area

Shaler MS														
Grade	Historic Resident Students			Current	Forecasted Resident Students									
	SY 2020	SY 2021	SY 2022	SY 2023	SY 2024	SY 2025	SY 2026	SY 2027	SY 2028	SY 2029	SY 2030	SY 2031	SY 2032	SY 2033
K	293	304	303	286	300.7	269.4	287.4	304.8	279.4	290.7	291.9	287.4	290.1	289.9
1	313	284	290	300	276.1	290.1	260.1	277.7	294.4	269.9	280.8	282.0	277.7	280.3
2	302	302	281	271	288.0	264.6	278.3	249.5	266.3	282.3	258.9	269.3	270.4	266.3
3	307	296	291	280	264.5	281.1	258.8	272.1	244.2	260.6	276.3	253.4	263.5	264.7
4	309	303	291	295	278.0	262.5	279.1	257.2	270.5	242.6	259.0	274.5	251.8	261.9
5	279	304	295	286	288.4	271.6	256.3	273.0	251.6	264.6	237.4	253.3	268.6	246.3
6	288	277	302	293	283.5	285.8	269.3	254.4	270.8	249.6	262.6	235.5	251.3	266.5
7	309	285	286	306	295.9	286.3	288.9	271.9	256.8	273.5	252.2	265.2	238.0	254.0
8	309	314	276	284	302.9	292.8	283.8	286.0	270.1	255.2	271.6	250.1	263.1	236.0
7-8	618	599	562	590	598.8	579.1	572.7	557.9	526.9	528.7	523.8	515.3	501.1	490.0
Capacity	Historic Capacity			Forecasted Capacity										
1,144	54%	52%	49%	52%	52%	51%	50%	49%	46%	46%	46%	45%	44%	43%

Annual Change	2020 to 2021	2021 to 2022	2022 to 2023	2023 to 2024	2024 to 2025	2025 to 2026	2026 to 2027	2027 to 2028	2028 to 2029	2029 to 2030	2030 to 2031	2031 to 2032	2032 to 2033
	-19.0	-37.0	28.0	8.8	-19.7	-6.4	-14.8	-31.0	1.8	-4.9	-8.5	-14.2	-11.1
	-3.1%	-6.2%	5.0%	1.5%	-3.3%	-1.1%	-2.6%	-5.6%	0.3%	-0.9%	-1.6%	-2.8%	-2.2%





Shaler Area School District Student Forecast SY 2023-2024 Resident Forecasts by Attendance Area

Shaler HS														
Grade	Historic Resident Students			Current	Forecasted Resident Students									
	SY 2020	SY 2021	SY 2022	SY 2023	SY 2024	SY 2025	SY 2026	SY 2027	SY 2028	SY 2029	SY 2030	SY 2031	SY 2032	SY 2033
K	293	304	303	286	300.7	269.4	287.4	304.8	279.4	290.7	291.9	287.4	290.1	289.9
1	313	284	290	300	276.1	290.1	260.1	277.7	294.4	269.9	280.8	282.0	277.7	280.3
2	302	302	281	271	288.0	264.6	278.3	249.5	266.3	282.3	258.9	269.3	270.4	266.3
3	307	296	291	280	264.5	281.1	258.8	272.1	244.2	260.6	276.3	253.4	263.5	264.7
4	309	303	291	295	278.0	262.5	279.1	257.2	270.5	242.6	259.0	274.5	251.8	261.9
5	279	304	295	286	288.4	271.6	256.3	273.0	251.6	264.6	237.4	253.3	268.6	246.3
6	288	277	302	293	283.5	285.8	269.3	254.4	270.8	249.6	262.6	235.5	251.3	266.5
7	309	285	286	306	295.9	286.3	288.9	271.9	256.8	273.5	252.2	265.2	238.0	254.0
8	309	314	276	284	302.9	292.8	283.8	286.0	270.1	255.2	271.6	250.1	263.1	236.0
9	305	332	341	290	305.1	325.2	314.7	304.4	306.6	290.3	274.1	291.3	268.4	282.8
10	317	295	305	314	270.5	285.0	303.8	294.3	284.9	287.1	270.7	255.6	272.4	251.1
11	347	308	286	293	302.5	262.1	275.2	293.6	284.1	275.6	276.8	263.2	248.4	264.1
12	295	289	315	297	295.0	305.2	264.4	277.3	296.1	286.5	278.6	279.1	266.3	251.3
9-12	1,264.0	1,224.0	1,247.0	1,194.0	1,173.1	1,177.5	1,158.1	1,169.6	1,171.7	1,139.5	1,100.2	1,089.2	1,055.5	1,049.3
Capacity	Historic Capacity				Forecasted Capacity									
1,716	74%	71%	73%	70%	68%	69%	67%	68%	68%	66%	64%	63%	62%	61%

Annual Change	2020 to 2021	2021 to 2022	2022 to 2023	2023 to 2024	2024 to 2025	2025 to 2026	2026 to 2027	2027 to 2028	2028 to 2029	2029 to 2030	2030 to 2031	2031 to 2032	2032 to 2033
	-40.0	23.0	-53.0	-20.9	4.4	-19.4	11.5	2.1	-32.2	-39.3	-11.0	-33.7	-6.2
	-3.2%	1.9%	-4.3%	-1.8%	0.4%	-1.6%	1.0%	0.2%	-2.7%	-3.4%	-1.0%	-3.1%	-0.6%

